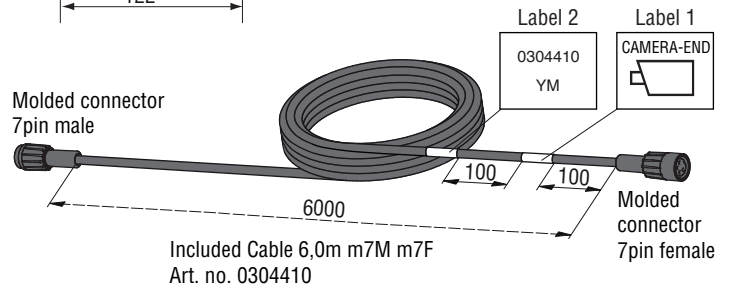
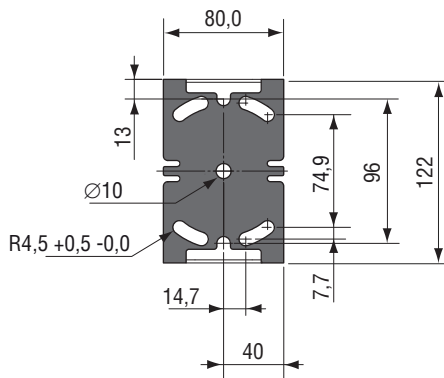
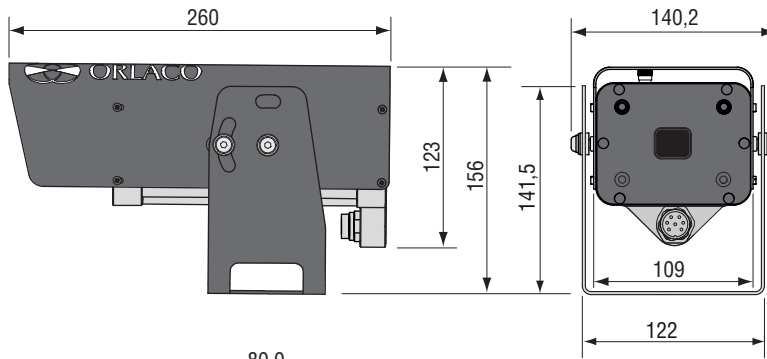


Product Data



Dimensions



Units in mm

TECHNICAL DATA

Camera TIC 320 9Hz connector type

When it is a military application you need an export license for this product.

Article number 0103732 Camera TIC 9Hz connector

Description

0103732 Camera TIC 9Hz connector

Special Features

Field switchable between NTSC and PAL. DDE (second generation Digital Detail Enhancement). (SSO) Smart Scene Optimization. (ACE) Active Contrast Enhancement. FFC Duration < 0.5sec (Flat Field Correction).

Sensor

Uncooled LWIR Thermal Imager 336 x 256 VOx Microbolometer.

Sensor
Pixel size
Frame Rates
Sensitivity
Scene Range
Digital zoom
Video
Lens
Color

25 micron.

30/60 Hz (NTSC); 25/50 Hz (PAL).

<50 mk f/1,0.

High Gain -40°C to +160°C. Low Gain -40°C to +550°C.

2x & 4x.

NTSC/PAL, field switchable.

WFOV (Wide Field Of View), 19mm (f1.24) 24° x18°.

15 Color Palettes (LUTs).

Electrical

Power input
Power consumption
Heater
Transient protection

Inrush current
Electrical Protection

Power Cable
Communication
Presets

12..30V/DC (24V/Dc = preferred voltage)

Heating off: 3,5W @ 24V/Dc, heating on: 7,1W @ 24V/Dc.

2.4W, Puls Width Modulated, activated from <+15°C.

Camera may be powered directly from 12v or 24v battery without additional electrical protection since camera has an integrated circuit that protects the camera against over- and undervoltage, spikes, ripples and loaddumps.

With and without heating: 0,7A at 24V, t=2ms.

>33V..<80V overvoltageprotection, <12V undervoltageprotection, protected against loaddumps, spikes and surges, reverse polarity on all wiring.

Included Art. no 0304410 Cable 6,0m m7M m7F.

RS232, High Speed Camera Communication with Orlaco monitor.

128 presets Visca and 255 presets Pelco-D.

Mechanical

Construction
Operating temperature
Temperature shock
Vibration
Shock
Bracket
Ingress protection

Anodized aluminium housing corrosion proof according to MIL-A-8625E (Acetic Acid Salt Spray Test);

Range -40°C to +80°C.

(5 degree per min).

(4,3gs three axis, 8hrs each).

(200g shock pulse w/ 11msec saw tooth).

Standard bracket suitable for mounting overhead and horizontally.

IP68 according to IEC 60529, Dust tight and protected against the effects of immersion in water up to 10m for 30 minutes and

IP69K according to DIN 40050-9, camera can withstand a high pressure cleaning with water: 14-16L/min 80°C and

100 Bars flow. Drynitrogen filled, 1,4 Bar overpressure.

2,6 Kg.

Certification

Approvals
Green Passport

EMC certified FCC/CE Class B. ROHS, REACH and WEEE Compliant.

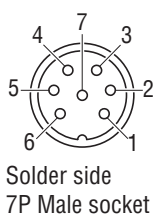
All materials are compliant to Green Passport requirements according IMO resolution MEPC.197(62) as adopted on 15 July 2011 (Maritime sector:International Maritime Organization concerning the functions of the Marine Environment Protection Committee)

Serial commands
Installation

See Orlaco Visca protocol manual; **IM0973300**.

See Installation Manual; **IM0973120**.

Electrical connections.



1 = Coax core	Video
2 = Coax shielding	Video GND
3 = Red	Camera power, 12...30V/DC
4 = Black	Camera 0V
5 = Yellow	Serial TX
6 = Orange	Serial RX
7 = Grey	N.C.
Shielding	GND

All data subject to change without notice. All dimensions are for commercial purpose only.

The camera/display systems from Orlaco comply with the latest CE, ADR, EMC and mirror-directive regulations, where applicable.

All products are manufactured in accordance with the ISO 9001 quality management system, ISO/TS 16949 quality automotive, ISO 14001 environmental management systems and all Ex products with the IECEx scheme and ATEX directives, where applicable.

